



Strada Slim Street Light

30W

Applications:

Residential and Commercial Applications.

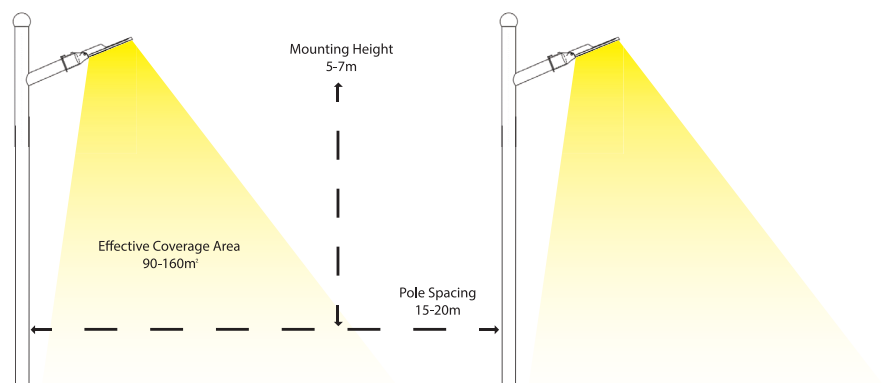
- Highly Durable LED Street Light constructed with a Die-Cast aluminium housing & PC Lens.
- Lumileds 3030 LED delivering an effective 150lm/W with a rated lifespan of L80B10 @ 50 000hrs.
- Type II-S beam angle preventing unnecessary backward light pollution.
- Wide input Voltage range 100V-277V with a 10kV (replaceable) built in surge protection allowing for maximum durability and robustness over the LED Luminaires lifespan.
- Wide operating temperature range of -25°~50°.
- Fits a standard D40-60mm Pole or D76-84 with our optional Pole Mount Adaptor HS016.
- IP66 rated luminaire with a CRI>83 for improved clarity & colour rendering.
- Nema Sensor ready LED Street light (60W/100W) for hassle free installation.
- Tool free maintenance with the Strada's gasket sealed power supply housing.

Product Performance

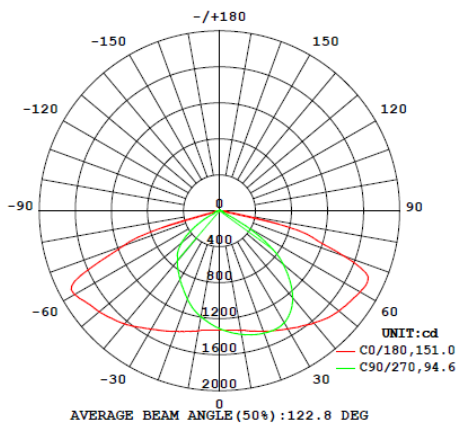
Wattage	30W
Colour Temperature & Stock Code	5700K - HS020 / 4000K - HS021
Operating Temperature	-25~50°C
Life Span/ LB Rating	L80B10@50000hr
IP Rating	IP66
LED Driver Brand	High Spec PioLED Driver
Beam Angle	140X70
Impact Protection Grade	IK08
Input Voltage	100-277V
Surge Protection	10kV (Replaceable)
Power Factor	0.95
CRI	83
Lumen Output	4200 Lumens
Lumen Efficiency	140lm/W
LED Chips	Lumileds 3030
LED Chips Qty	56
Dimmable	Non-Dimmable

Physical Characteristics

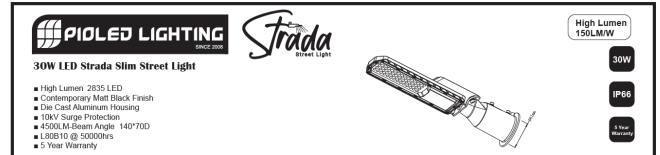
Weight (g)	1000
Housing Material	Pure Aluminium + PC Len
Product Dimensions (mm)	425*108*96
Mounting Option	Fits a standard D40-60mm Pole or D76-84 with our optional Adaptor HS016
Bolts and Screws	316 Stainless steel



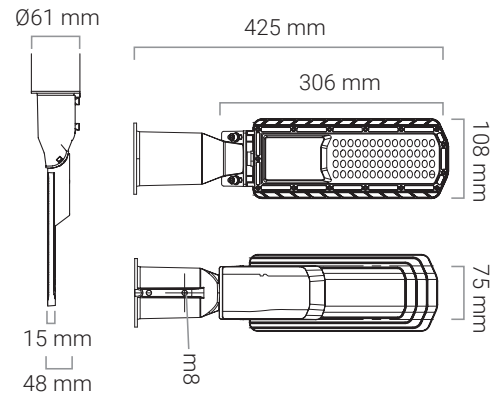
Luminous Intensity Distribution Diagram



Packaging



Dimension Drawing



Technical Parameters

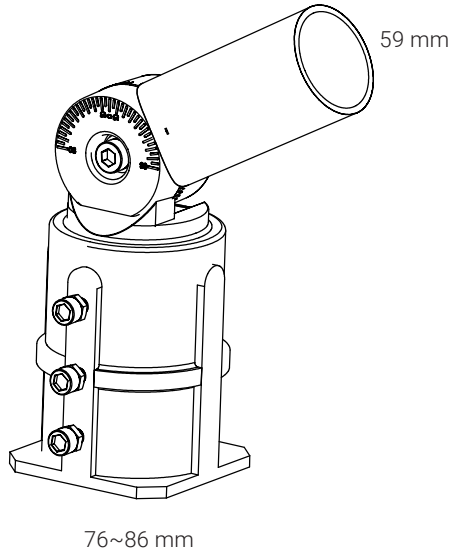
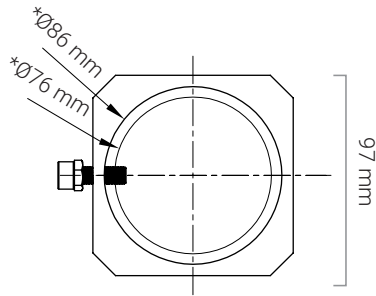
Input Current	1.144A
Output Voltage	DC90-130V
Humidity	10-95%
Frequency	50/60Hz
In Rush Current	94A
Output Current	2200mA
THD	<10%
TA & TC	TA=50/TC=85
IES (Yes or No)	Yes
Regulatory Qualifications	
Class Rating	Class II
Energy Efficiency	A
Certification	CE, EMC, IEC60598, ErP
Accessories	
Optional accessories	76-84mm Strada Adaptor- HS016
Packaging info	
Storage Temp	-20~+50°
Carton Size (mm)	560*485*620
QTY/CTN	15
Net Weight	1
Gross Weight	1,395



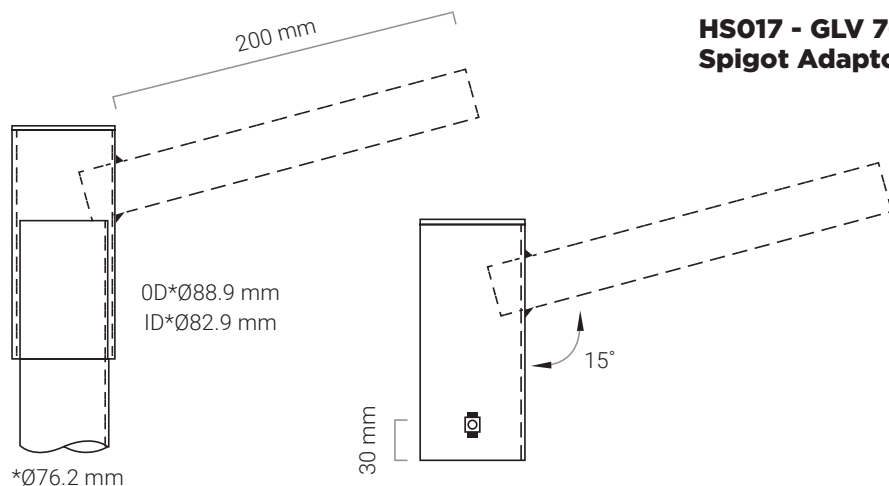
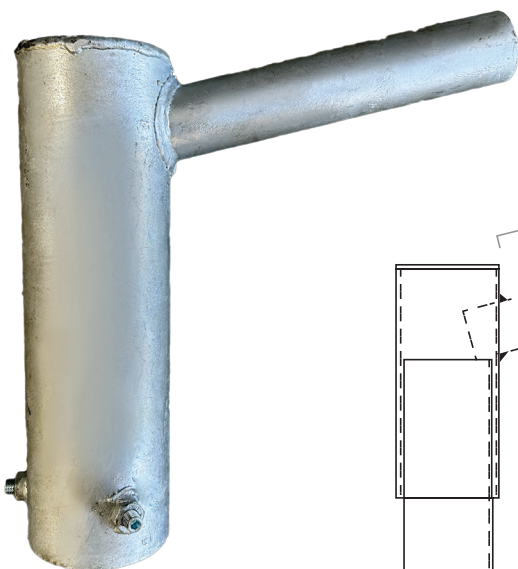
**PIOLED
LIGHTING**
SINCE 2008

Strada Accessories

**HS016 - Aluminium
Adaptor for Strada
76-84mm**



Physical Characteristics	
Weight (kg)	1,08
Housing Material	Die Cast Aluminium
Packaging info	
Carton Size (mm)	505*330*415
QTY/CTN	20
Net Weight	19.2
Gross Weight	20



**HS017 - GLV 76mm
Spigot Adaptor**