

# Strada Street Light

## 100W

### Applications:

Residential and Commercial Applications.

- Highly Durable LED Street Light constructed with a Die-Cast aluminium housing & PC Lens.
- Lumileds 3030 LED delivering an effective 150lm/W with a rated lifespan of L80B10 @ 50 000hrs.
- Type II-S beam angle preventing unnecessary backward light pollution.
- Wide input Voltage range 100V-277V with a 10kV (replaceable) built in surge protection allowing for maximum durability and robustness over the LED Luminaires lifespan.
- Wide operating temperature range of -25°~50°.
- Fits a standard D40-60mm Pole or D76-84 with our optional Pole Mount Adaptor HS016.
- IP66 rated luminaire with a CRI>83 for improved clarity & colour rendering.
- Nema Sensor ready LED Street light (60W/100W) for hassle free installation.
- Tool free maintenance with the Strada's gasket sealed power supply housing.

## Product Performance

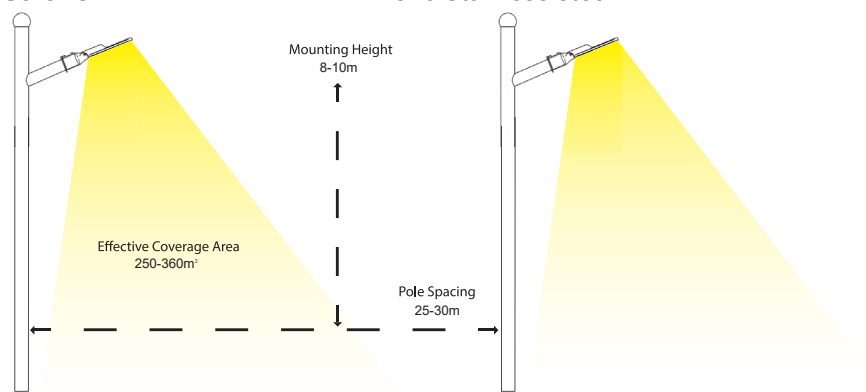
<b>Wattage</b>	100W
<b>Colour Temperature &amp; Stock Code</b>	• 5700K - <b>HS004</b> / 4000K - <b>HS005</b>
<b>Operating Temperature</b>	-25~50°C
<b>Life Span/ LB Rating</b>	L80B10@50000hr
<b>IP Rating</b>	IP66
<b>LED Driver Brand</b>	High Spec PioLED Driver
<b>Beam Angle</b>	T2-S
<b>Impact Protection Grade</b>	IK08
<b>Input Voltage</b>	100-277V
<b>Surge Protection</b>	10kV (Replaceable)
<b>Power Factor</b>	0.95
<b>CRI</b>	>83
<b>Lumen Output</b>	17 000 (from batch 2406)
<b>Lumen Efficiency</b>	170lm/W (from batch 2406)
<b>LED Chips</b>	Lumileds 3030
<b>LED Chips Qty</b>	128
<b>Dimmable</b>	Non-Dimmable

## Physical Characteristics

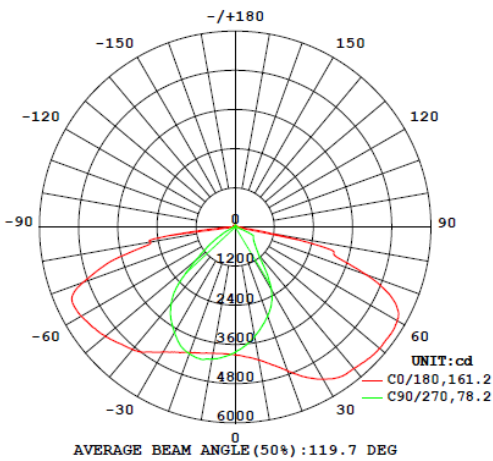
<b>Weight (g)</b>	4200
<b>Housing Material</b>	Pure Aluminium + PC Len
<b>Product Dimensions (mm)</b>	245*550*172
<b>Mounting Option</b>	Fits a standard D40-60mm Pole or D76-84 with our optional Adaptor HS016

### Bolts and Screws

316 Stainless steel



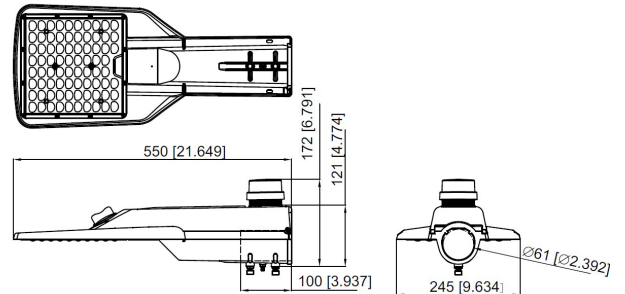
## Luminous Intensity Distribution Diagram



## Packaging



## Dimension Drawing



## Technical Parameters

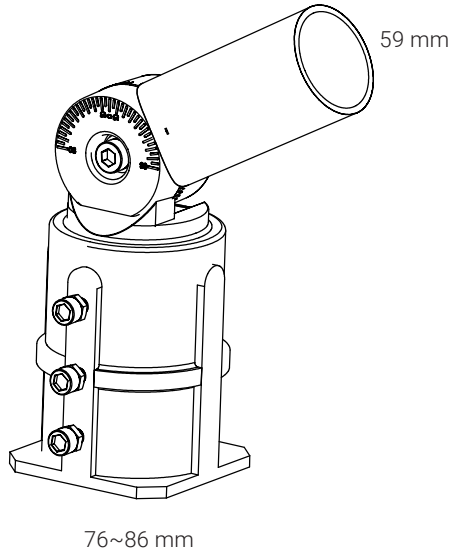
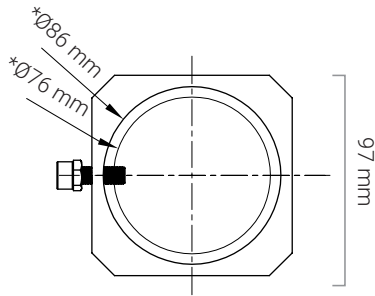
<b>Input Current</b>	1.1A
<b>Output Voltage</b>	46.4V
<b>Humidity</b>	10-98%
<b>Frequency</b>	50/60Hz
<b>In Rush Current</b>	70A
<b>Output Current</b>	2380mA
<b>THD</b>	≤20%
<b>TA &amp; TC</b>	TA=60/TC=90
<b>IES (Yes or No)</b>	Yes
<b>Regulatory Qualifications</b>	
<b>Class Rating</b>	Class II
<b>Energy Efficiency</b>	88%
<b>Certification</b>	CE, EMC, IEC60598, ErP
<b>Accessories</b>	
<b>Optional accessories</b>	76-84mm Strada Adaptor- <b>HS016</b>
<b>Packaging info</b>	
<b>Storage Temp</b>	-20~+50°
<b>Carton Size (mm)</b>	610*285*200
<b>QTY/CTN</b>	1
<b>Net Weight</b>	4.2
<b>Gross Weight</b>	5.1



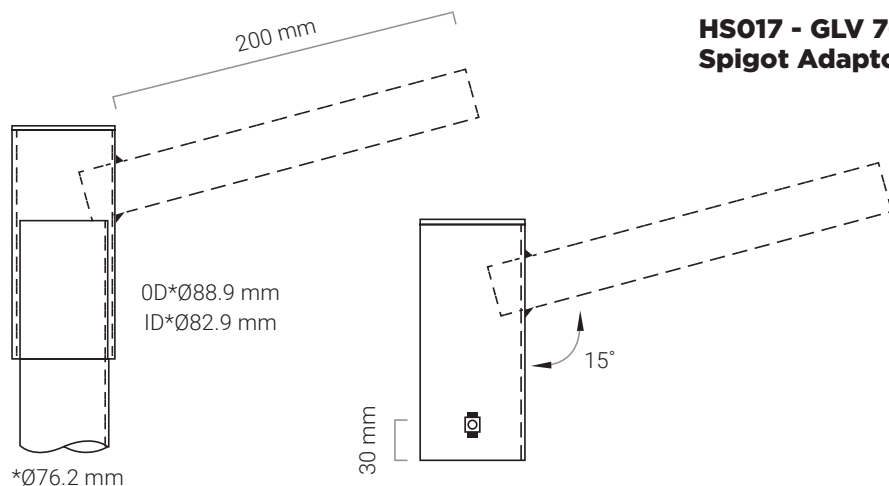
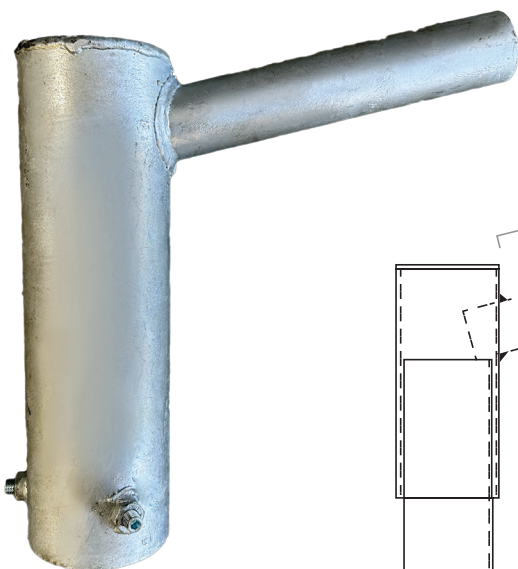
**PIOLED  
LIGHTING**  
SINCE 2008

# Strada Accessories

**HS016 - Aluminium  
Adaptor for Strada  
76-84mm**



Physical Characteristics	
<b>Weight (kg)</b>	1,08
<b>Housing Material</b>	Die Cast Aluminium
Packaging info	
<b>Carton Size (mm)</b>	505*330*415
<b>QTY/CTN</b>	20
<b>Net Weight</b>	19.2
<b>Gross Weight</b>	20



**HS017 - GLV 76mm  
Spigot Adaptor**