



# LED 24V CV Dim Driver

150W

PioLED Lighting (Pty) Ltd  
031 701 5746  
info@pioledlighting.africa

## Product Performance

Wattage	150W
Colour Temperature & Stock Code	PS016
Operating Temperature	-20 ~ 50°C
IP Rating	IP20
Input Voltage	220-240V
Surge Protection	2kV
Dimmable	Yes Triac Push Dim

## Physical Characteristics

Weight (g)	460g±10g
Housing Material	PC
Product Dimensions (mm)	H 43 x L 352 x W 30
Mounting Option	-

## Technical Parameters

Input Current	≤0.75A
Output Voltage	24V DC
Humidity	20 ~ 95%RH, non- condensing
Frequency	50/60Hz
In Rush Current	Cold start 45A
Output Current	Max 6.25A
THD	230V AC@THD<10%, at full load
TA & TC	ta: -20 ~ 50°C tc: 90°C
IES (Yes or No)	No

## Regulatory Qualifications

Energy Efficiency	A
Certification	CE

## Packaging info

Storage Temp	-40°C ~ 80°C
Carton Size (mm)	37*36*36.11cm
QTY/CTN	20
Net Weight	9.15 kg
Gross Weight	10.15 kg

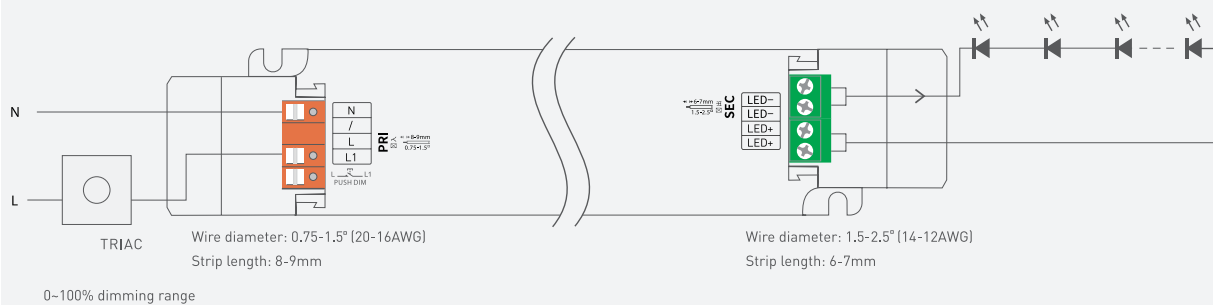
E&OE

PioLED Lighting (Pty) Ltd | 031 701 5746 | info@pioledlighting.africa

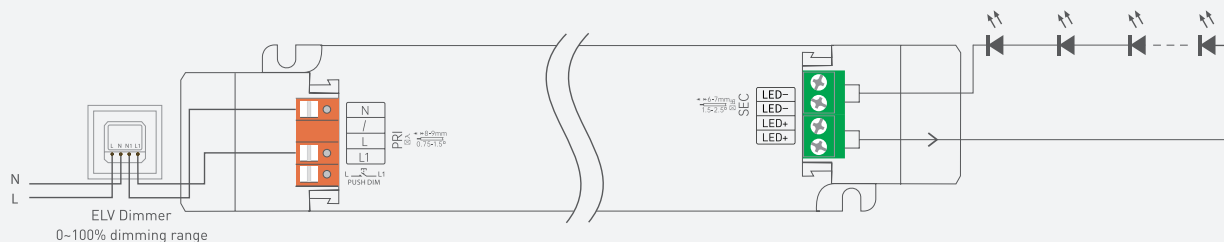
www.pioledlighting.co.za

## Wiring Diagram

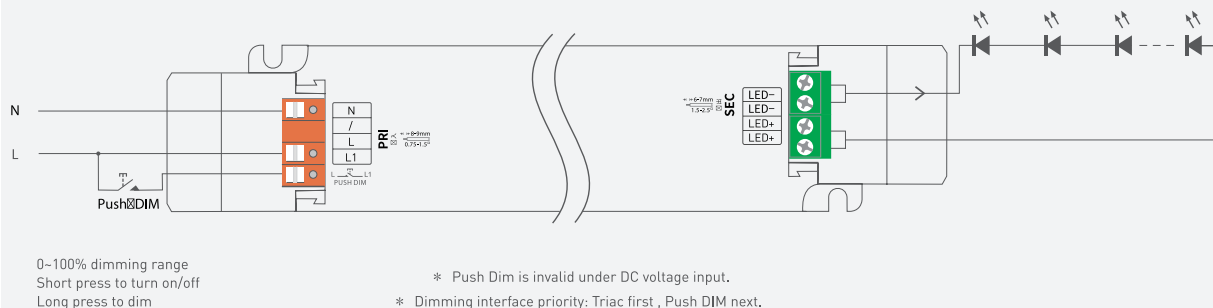
### Triac Connection



### ELV Connection



### Push DIM Connection



## Push Dimming

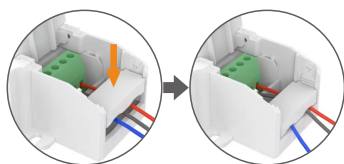


Reset switch

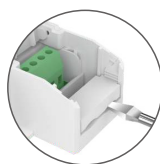
- On/off control: Short press.
  - Stepless dimming: Long press.
  - With every other long press, the brightness goes to the opposite direction.
  - Dimming memory: The lights will return to its previous brightness value when short press on PUSH DIM button.
- Power on again after power cut, the output brightness is subjected to the input voltage of drivers.

## Protective Housing Application Diagram

### Tension plate

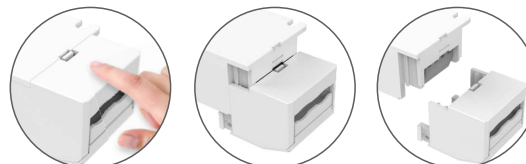


Push the tension plate down to fix the electric wires.



Push the side plate outwards and remove the tension plate by prying it up with a tool at the same time.

### Remove the protective housing



Pull the bottom left and right from the bottom to remove it.